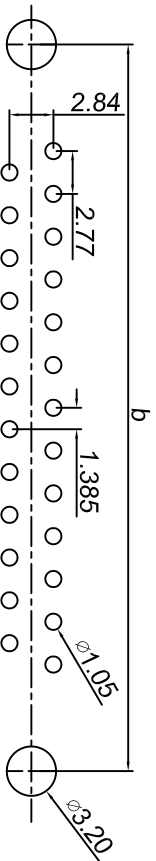
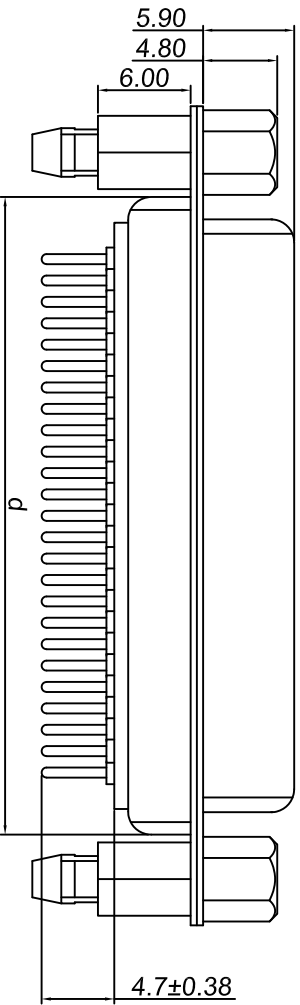
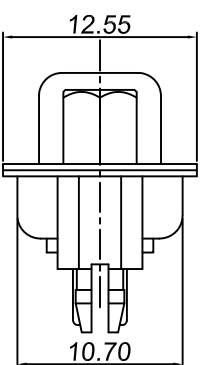
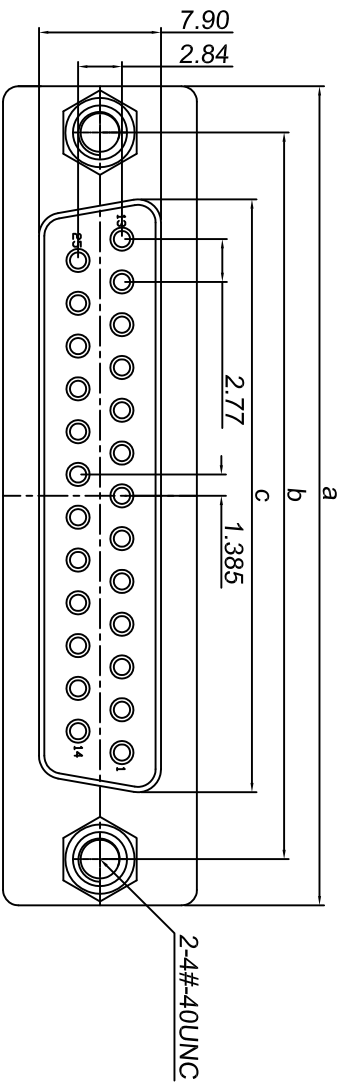


ROHS2.0



PCB layout

PIN	a±0.35	b±0.25	c±0.25	d±0.25
9	30.81	24.99	16.33	19.20
15	39.14	33.32	24.75	27.65
25	53.04	47.04	38.38	41.20
37	69.40	63.50	54.80	57.40

REV.	ECH NO.	LOCATIONS	DESCRIPTION	DATE	DESIGN
A0			原始版本(INITIAL EDITION)	2021.04.24	m t

说明:

- 特性:
  - 额定电压 : 500V AC MIN
  - 额定电流 : 5A
  - 接触阻抗 : 30mΩ MAX.
  - 绝缘阻抗 : 5000MΩ MIN.at 500V DC
  - 耐电压值 : 500V AC RMS for 1Minute
  - 温度范围 : -55C°~+105C°
- 材料:
  - 胶芯 : PBT+30% G.F.(UL94V-0)-WH
  - 车PIN : 黄铜,镀金1u"
  - 铁壳 : SPCC,镀镍/镀锡
- 注意事项:
  - a. 盐雾测试过24H不能有氧化生锈现象
  - b. 成品不能有弯针,R角不一致等不良。


**东莞市跃展精密连接器有限公司**  
 Dongguan Yuezhan Precision Connectors Co., Ltd  
 Tel: +86-769-8316381/2 Fax: +86-769-8316381 Web: www.dgzyepc.com

UNIT: mm [inch]  
 TOLERANCE:  
 X.X ±0.35  
 X.XX ±0.25  
 X.XXX ±0.15  
 Angle ±3.0°  
 SCALE: 1:1 SIZE: A4  
 DESIGN: 车瑞 2021.04.24  
 CHECKED: 车瑞 2021.04.24  
 APPROVED: 车瑞 2021.04.24  
 PART NAME: 车针DP F1白插板锁紧系列  
 PART NO.  
 DRAW NO.  
 SHEET NO. 01 OF 01